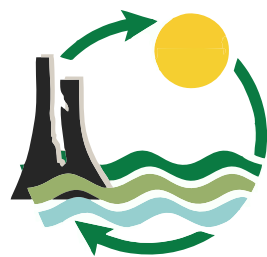




Course schedule 2018



CEM
Centre for Environmental Management





Fundamentals of SHEQ management

Environment



Fundamentals of environmental management

CEM-01.1.1

If you are new to the field of environmental management and need to take responsibility for managing environmental issues, this course is for you.

Date: 5-9 March 2018

Course Fee: R12 150 (No VAT charged)

[Read More](#)



Safety, health, environmental and quality (SHEQ) management

CEM-01.2.1

If you are responsible for managing SHEQ risks in your organisation, this course is for you.

Date: 9-20 April 2018

Course Fee: R17 500 (No VAT charged)

[Read More](#)





Environmental health and safety law

Environmental law



Environmental Law

If you are responsible for the management of legal and financial risks associated with potential environmental liabilities, this course is for you.

Environmental Law (Master Class)

CEM-02.1.1

Date: 12-16 March 2018 (Gauteng)

Course Fee: R16 300 (No VAT charged)



Environmental Law (Introduction)

CEM-02.1.1a

Date: 22-24 May 2018 (Gauteng)

Course Fee: R9 990 (No VAT charged)



[Read More](#)



Environmental law- integrated water resource management

CEM-02.1.2

If you are responsible for the management or governance of water-related impacts and challenges, this course is for you.

Date: 18-22 June 2018 (Potchefstroom)

Course Fee: R14 100 (No VAT charged)

[Read More](#)



Environmental law- integrated waste management

CEM-02.1.3

If you are responsible for the management of waste or the implementation of the NEM:WA, this course is for you. For the different role-players in the waste management life cycle.

Date: 26-27 September 2018

Course Fee: R5 350 (No VAT charged)

[Read More](#)

Environmental law



Environmental law- natural resource management

CEM-02.1.6

If you want to gain in-dept knowledge of the legislative provisions in South Africa as they apply to biodiversity conservation in both the public and private sector, this course is for you.

Date: 19-23 February 2018
Course Fee: R14 050 (No VAT charged)

[Read More](#)



Environmental law- mine closure and rehabilitation (Introduction)

CEM-02.1.7a

If you are responsible for the management of mine closure and rehabilitation, this course is for you.

Date: TBC
Course Fee: R9 900 (No VAT charged)

[Read More](#)

3 days



Environmental law- for the mining sector

CEM-02.1.8

If you, as a manager or operator, find it increasingly difficult to keep track of the changes to the legal environment, what the legal compliance requirements are, and how to interpret and translate them into operation requirements this course is for you.

Date: 14-16 August 2018
Course Fee: R9 850 (No VAT charged)

[Read More](#)

3 days

Health and safety law



3 days

Occupational health and safety law

CEM-02.2.1

If you, as a manager or operator, find it increasingly difficult to keep track of changes to the legal environment, what the legal compliance requirements are, and how to interpret and translate them into operational requirements this course is for you.

Date: 5-7 June 2018

Course Fee: R9 910 (No VAT charged)

[Read More](#)



3 days

Mine health and safety law

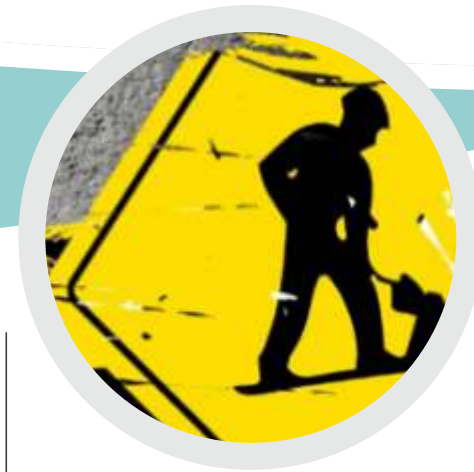
CEM-02.2.2

If you find it increasingly difficult to keep track of changes to the legal environment, what the legal compliance requirements are, and how to interpret and translate them into operation requirements this course is for you.

Date: 31 July - 2 August 2018

Course Fee: R9 870 (No VAT charged)

[Read More](#)



Health and safety law for construction activities

CEM-02.2.3

If you are tasked with understanding health and safety on a construction site; assisting with the development with health and safety policies and procedures; developing and implementing a health and safety site plan; and/or monitoring the implementation of the health and safety plan, systems and procedures, this course is for you.

Date: 10-14 September 2018

Course Fee: R12 400 (No VAT charged)

[Read More](#)

Environmental health and safety law



1
day

NEW
PUBLIC
COURSE

Environmental legal liability awareness

CEM-02.3.1b

If you are responsible for the management of legal and financial risks associated with potential environmental liabilities, this course is for you.

Date: 4 April 2018 (Gauteng)

Course Fee: R2 600 (No VAT charged)

[Read More](#)





Management systems

Management systems



Environmental management systems

CEM-03.1.1

If you are tasked with designing, developing, documenting, implementing, maintaining and improving an EMS, this course is for you. In addition, this course is also for aspiring EMS auditors.

Date: 9-13 April 2018
Course Fee: R14 200 (No VAT charged)

[Read More](#)



Environmental management systems (compliance management)

CEM-03.1.1a

If you are responsible for compliance management, this course is for you.

Date: TBC
Course Fee: R9 600 (No VAT charged)

3 days

Environmental management systems (performance management)

CEM-03.1.1b

If you are responsible for performance management, this course is for you.

Date: TBC
Course Fee: R9 600 (No VAT charged)

3 days



Occupational health and safety management systems

CEM-03.2.1

If you need to design, develop, document, implement, maintain and improve an OHS management system, this course is for you. In addition this course is also for aspiring OHSms auditors.

Date: 7-11 May 2018
Course Fee: R12 850 (No VAT charged)

[Read More](#)

Management systems



3 days

Documenting management systems

CEM-03.6.2

If you are required to generate management system procedures/processes in line with ISO 10013 for any management system, this course is for you.

Date: 11-13 September 2018

Course Fee: R9 750 (No VAT charged)

[Read More](#)



Environmental management system transition

CEM-03.7.1

Prerequisites: Prior learning and/or experience in ISO14001:2004
If you are an EMS practitioner or auditor who wishes to understand the requirements of ISO 14001:2015, this course is for you.

Date: 27-28 February 2018

Course Fee: R4 900 (No VAT charged)

[Read More](#)



Environmental management system - auditor transition

CEM-03.7.1.1

Prerequisites: Previous Environmental Management Systems (ISO 4001:2015), as well as Environmental Auditing training or experience.

If you are or want to be a lead EMS auditor, tasked with conducting audits for both internal and EMS certification purposes, and you need to transition your knowledge and skills to the requirements of ISO 14001:2015, this course is for you.

Date: 1 March 2018

Course Fee: R2 550 (No VAT charged)

[Read More](#)

Management systems



Occupational health and safety transition

CEM-03.7.2

Prerequisites: Prior learning and/or experience in OHSAS 18001:2007

If you are an OHS practitioner or auditor who wishes to understand the requirements of ISO 45001:2017, this course is for you.

Date: 27-28 March 2018

Course Fee: R5 000 (No VAT charged)

[Read More](#)





AUDIT

Management system auditing

Management system auditing



Environmental management system - lead auditor

CEM-04.1.1

Prerequisites: Environmental law (CEM-02.1.1) and EMS (CEM-03.1.1) Courses

If you are or want to be a lead EMS auditor, tasked with conducting audits for both internal and EMS certification purposes in conformity with SAATCA and IPC requirements, this course is for you. This course is also for you if you want to be an informed EMS auditee.

Date: 25-29 June 2018
Course Fee: R15 100 (No VAT charged)

[Read More](#)



Occupational health and safety management system - lead auditor

CEM-04.2.1

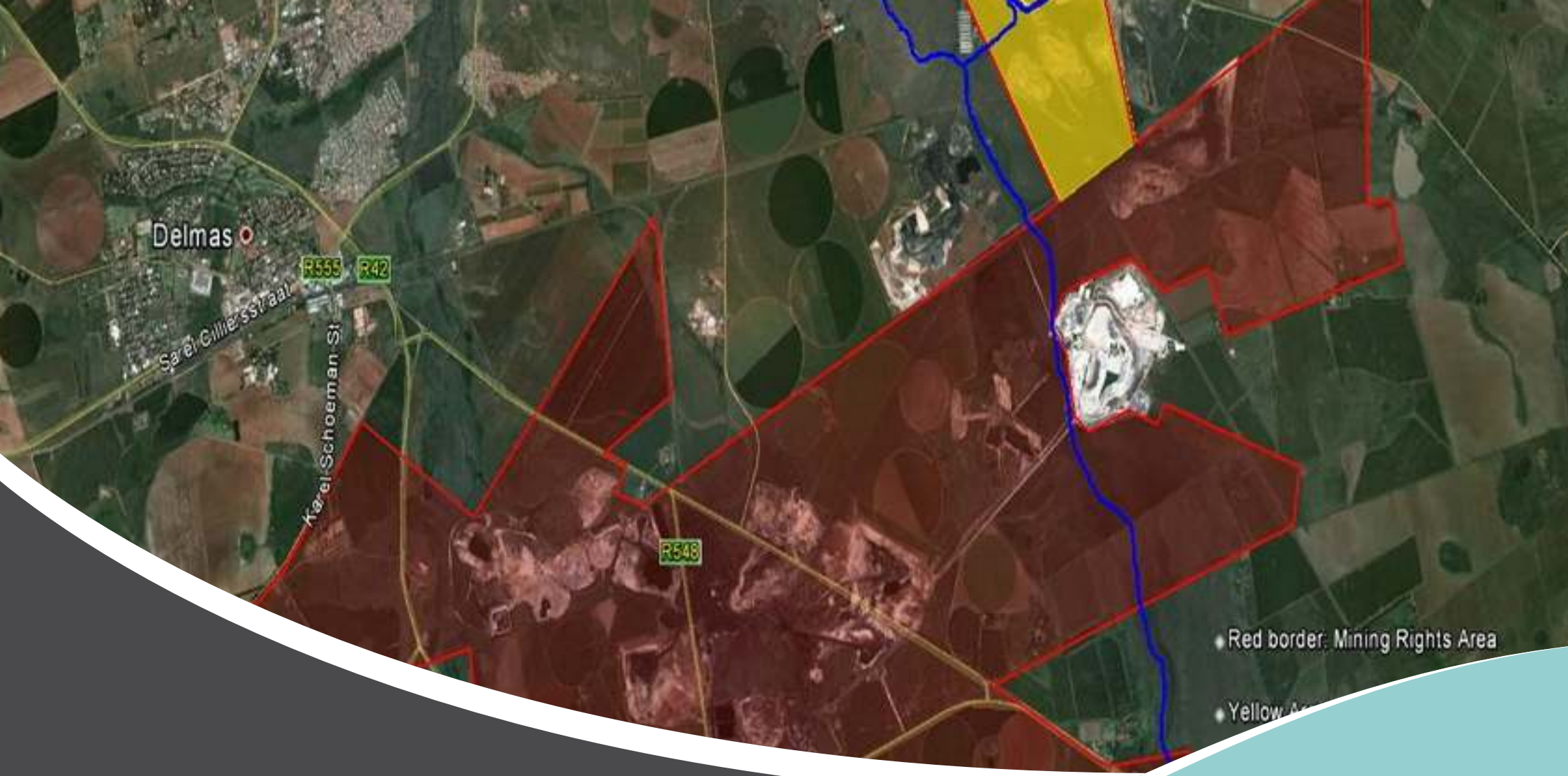
Prerequisites: OHSAS (CEM-03.2.1) and OHS Law (CEM-02.2.1) Courses

If you are or want to be a lead OHSms auditor, conducting audits for both internal and OHSAS certification purposes, this course is for you. This course is also for you if you want to be an informed OHSms auditee.

Date: 25-29 June 2018
Course Fee: R15 000 (No VAT charged)

[Read More](#)





SHE management instruments and tools

SHE management instruments and tools



Environmental impact assessment for practitioners

CEM-05.1.1

If you are an environmental manager involved in development and/or operational processes, a consultant involved in doing EIAs, or a government official that has to review and assess applications for environmental authorisations, this course is for you

Date: 18-22 June 2018 (Gauteng)
Course Fee: R13 950 (No VAT charged)

[Read More](#)



The roles and responsibilities of an environmental control officer

CEM-05.2.1

If you want to enter the ECO field, or if you are currently employed as an ECO, this course is for you since it will equip you with a better understanding of the roles and responsibilities of an ECO whilst also highlighting the potential challenges faced by ECOs in the construction environment.

Date: 27-31 August 2018
Course Fee: R13 850 (No VAT charged)

[Read More](#)



Environmental risk assessment and management (ERAM)

CEM-05.3.1

If you are tasked with conducting environmental risk assessments and generating environmental risk management plans in conformity with ISO 31000, this course is for you.

Date: 23-27 July 2018
Course Fee: R14 000 (No VAT charged)

5 days

Introduction to environmental risk assessment and management

CEM-05.3.1a

Date: 4-6 September 2018
Course Fee: R9 900 (No VAT charged)

3 days

[Read More](#)



Specific environmental sectors or media

Specific environmental sector or media



3 days

Dangerous goods & hazardous substances management

CEM-06.1.1

If you are an operator or manager tasked with appropriately managing significant environmental and occupational health and safety matters related to dangerous goods, this course is for you.

Date: 10-12 July 2018
Course Fee: R9 760 (No VAT charged)

[Read More](#)



3 days

Integrated waste management

CEM-06.1.2

If you are an environmental manager, responsible for the management of waste and waste-related impacts this course is for you.

Date: 31 July - 2 August 2018
Course Fee: R9 860 (No VAT charged)

[Read More](#)



Specific environmental sector or media



Essential air quality management

CEM-06.3.1

If you are involved in air quality management or need to understand the technical concepts and terminologies used in air quality management, this course is for you.

Date: 12-14 June 2018
Course Fee: R7 900 (No VAT charged)

[Read More](#)



Water quality monitoring

CEM-06.4.1

If you are an environmental manager, scientist or professional, responsible for the management of water and water-related impacts, this course is for you.

Date: 28-30 August 2018
Course Fee: R9 800 (No VAT charged)

[Read More](#)



Climate change management

CEM-06.6.1

If you are responsible for developing and implementing carbon management and climate change mitigation and adaptation strategies, this course is for you.

Date: 7-11 May 2018
Course Fee: R13 900 (No VAT charged)

[Read More](#)

Specific environmental sector or media



Integrated land management

CEM-06.8.1

If you are a professional, environmental manager, land management/rehabilitation practitioner, estate manager or regulator that has to conduct assessments, manage disturbed land or undertake rehabilitation, this course is for you.

Date: 5-9 November 2018
Course Fee: R12 950 (No VAT charged)

[Read More](#)



Ecological rehabilitation and mine closure

CEM-06.8.2

If you are a manager, professional or practitioner responsible for ecological rehabilitation and mine closure, or a regulator that must ensure that ecological rehabilitation and mine closure is implemented, then this course is for you.

Date: 3-7 September 2018
Course Fee: R13 800 (No VAT charged)

[Read More](#)



Contact us:

Public course enquiries

Registration Office

+27 (018) 299 2714/15/24

+27 (018) 299 2726

ceminfo@nwu.ac.za

On-site training and advisory services

Ms Wanda Hofmeyr

+27 (018) 299 1590

+27 (018) 299 4266

cemprojects@nwu.ac.za

Invoice and payment enquiries

Mrs Liezel van Zyl

+27 (018) 299 1469

+27 (018) 299 4266

liezel.vanzyl@nwu.ac.za

Visit our website for more information: www.cem-nwu.co.za

